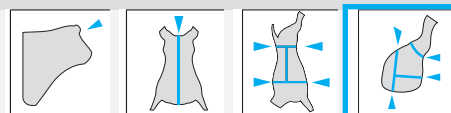


## ELECTRIC MOTOR FOR TRIMMERS

...more power in modern meat processing



### ELECTRIC MOTOR

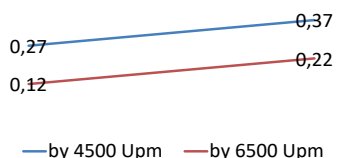
- Integrated handpiece mounting
- Shorter downtimes due to low-wear operation
- Compact and light aluminium housing
- Hygienic design
- Available for connection units EF1 and EF2
- All handpieces and trimmer heads can be used individually with both systems

### TECHNICAL DATA

**NEW - NEW**

	TM-E6000	TM-E6001	TM-E6001 EVO2
Weight (kg)	16 kg	16 kg	16,5 kg
Revolutions (rpm)	up to 6500	up to 6500	up to 6500
Protection class	IP 65	IP 65	IP 65
Output	400 watts (50-60Hz)/VA 0.5 hp (50-60Hz)/VA	400 watts (50-60Hz)/VA 0.5 hp (50-60Hz)/VA	550 watts (100Hz)/VA 0,5 hp (100Hz)/VA

#### Increase of the tilting moment



FREUND Maschinenfabrik GmbH & Co. KG

Schulze-Delitzsch-Str. 38  
33100 Paderborn  
mail@freund.eu

Fon: +49 (5251) 1659 - 0  
Fax: +49 (5251) 1659 -77  
www.freund-germany.com